



National Institute of Food and Agriculture

U.S. DEPARTMENT OF AGRICULTURE

BIOENERGY, CLIMATE AND ENVIRONMENT
FOOD PRODUCTION AND SUSTAINABILITY
YOUTH, FAMILY AND COMMUNITY
FOOD SAFETY AND NUTRITION
INTERNATIONAL PROGRAMS
OFFICE OF GRANTS AND FINANCIAL MANAGEMENT

USDA NIFA

USDA-NIFA Hispanic-Serving Institutions Education Grants Program (HSI)

FEEDING PEOPLE, FUELING PROGRESS | [NIFA.USDA.GOV](https://nifa.usda.gov)

USDA IS AN EQUAL OPPORTUNITY PROVIDER, EMPLOYER AND LENDER





Presenters

Dr. Irma A. Lawrence
ilawrence@usda.gov



Agenda

USDA and NIFA --Brief Overview

HSIs Program

Education Programs in AFRI

Other NIFA Programs

Questions



Where Does NIFA Fit Within USDA?

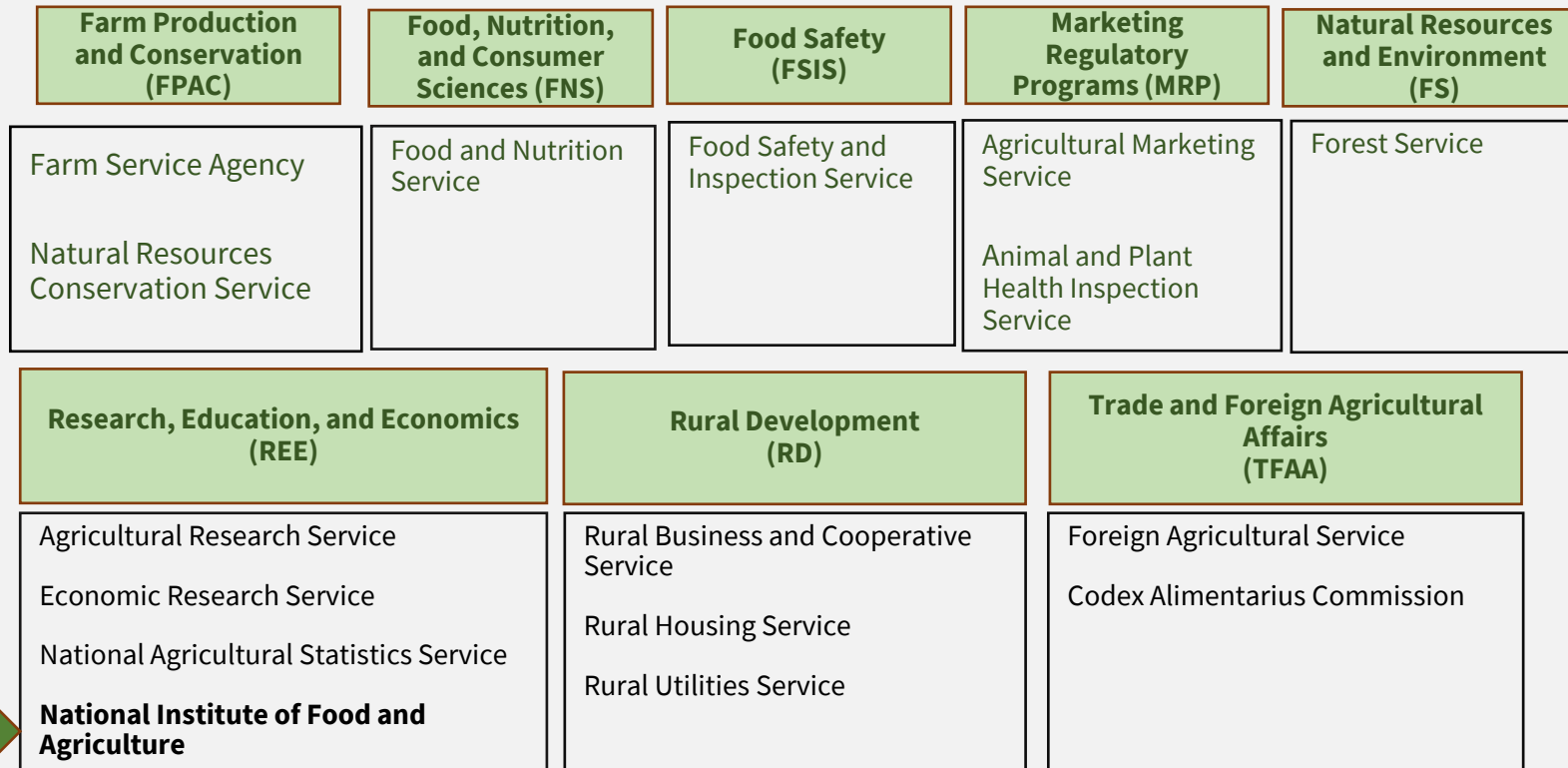


U.S. Department of Agriculture
Tom Vilsack
Secretary

USDA Offices

- Inspector General
- General Counsel
- Chief Financial Officer
- Chief Economist
- Budget and Program Analysis
- Communications
- Partnerships and Public Engagement
- Tribal Relations
- Hearing and Appeals
- Chief Information Officer
- Over 100,000 employees within 29 offices

USDA Mission Areas & Agencies





NIFA

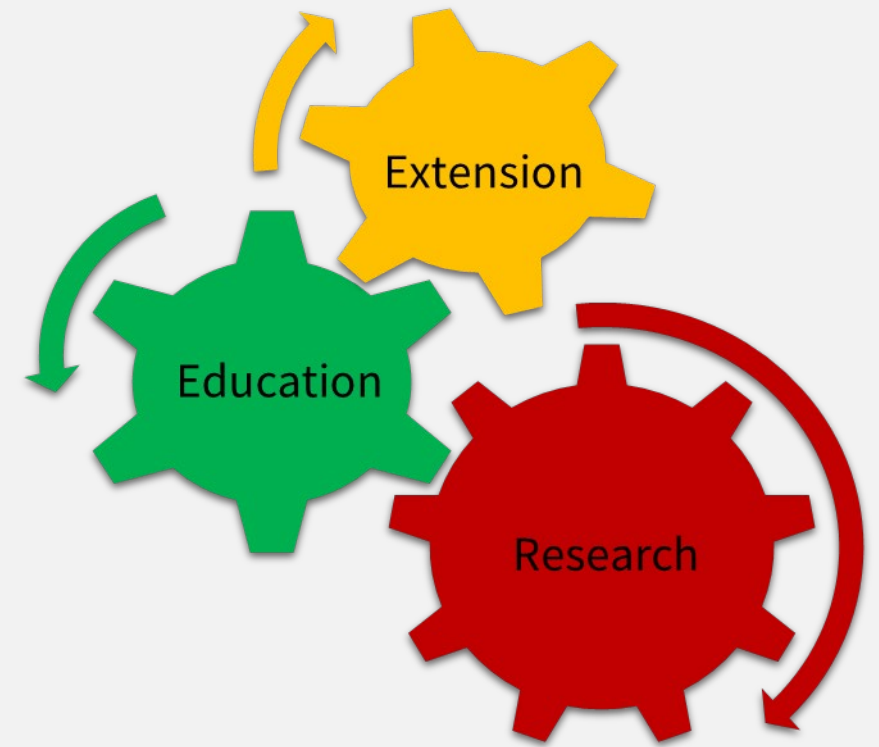
Mission Statement:

Invest in and advance agricultural research, education, and extension to solve societal challenges.

NIFA Budget:

FY 2024 budget – \$1.9 Billion

Focus is domestic, but some opportunities for global engagement; must advance domestic mission.



Topics Covered by NIFA Programs



Advanced Technologies

Bioenergy; Biotechnology; Nanotechnology



Animals

Animal Breeding; Animal Health; Animal Production; Aquaculture



Business and Economy

Markets and Trade; Natural Resource Economics; Small Business



Natural Resources

Forests; Grassland and Rangeland; Soil, Water, and Air



Education

Minority Serving Institutions; Teaching and Learning; Workforce Development



Environment

Climate Change; Ecosystems; Invasive Pests and Diseases



Farming and Ranching

Agriculture Safety & Technology; Farmer Education; Organic & Family Farms



Human Sciences

Community Vitality; Family Well-Being; Youth



Food Science

Food Quality; Food Safety



Food and Nutrition Security

Nutrition; Obesity; Wellness



International

Global Engagement; Global Food Security



Plants

Crop Production; Pest Management; Plant Breeding; Plant Health



NIFA Resources

NIFA webinars and events:

- NIFA events calendar:
<https://nifa.usda.gov/events>
- Sign-up for NIFA newsletters:
https://public.govdelivery.com/accounts/USDANIFA/subscriber/new?qsp=USDANIFA_2
- Newsletter:
<https://www.nifa.usda.gov/resource/nifa-update>

Find a funding opportunity:

- Funding opportunities:
<https://www.nifa.usda.gov/grants/funding-opportunities>
- Upcoming RFA calendar:
<https://nifa.usda.gov/upcoming-rfa-calendar>
- Programs list
<https://nifa.usda.gov/grants/programs#competitive>
- RFA list
<https://nifa.usda.gov/grants/request-for-application-list-rfa>

Application resources:

- NIFA Grant Resources:
<https://nifa.usda.gov/grant-training>
- Submitting a grant:
<https://nifa.usda.gov/apply-grant>
- Competitive Grants Flowchart:
<https://nifa.usda.gov/competitive-grants>
- NPL contacts
<https://nifa.usda.gov/about-nifa/who-we-are/organizational-structure/national-program-leaders>

Volunteer to serve as a reviewer <https://www.nifa.usda.gov/panelist-recruitment-training>



FY 2025 Submission Deadlines HSI Grants Program (estimates)

Regular Grant (Education & Community Development):

February 4, 2025

Collaboration Grant

February 5, 2025

Conference Grant

February 6, 2025

All applications are due at 5:00 pm ET

Program Code: NJ

AL Number: 10.223

Anticipated Budget: \$15.3 million

<https://nifa.usda.gov/funding-opportunity/hispanic-serving-institutions-education-grants-program-hsi>



FY 2025 Hispanic-Serving Education (HSI) Grants Program

Attract, support, and prepare undergraduate and graduate students from underrepresented groups for careers in food, agricultural, and natural resources

Enhance the quality of postsecondary instruction in the food and agricultural sciences

Provide opportunities and access to food and agricultural careers in the public and private sectors

Align the efforts of HSIs and other non-profits to support academic development and career attainment of underrepresented groups

Cost Share or Matching

- No Matching is required
- Matching resources will not be factored into the review process as evaluation criteria

Application Details

- Project Summary (1 page)
- Project Narrative has a **25-page limit** and will be strictly enforced
 - **Double spaced**
 - 12-point Times New Roman font
 - Includes text, figures and tables
 - Tables may be single spaced
- Budget
- **Data Management Plan ***
- Expected Outcomes
- Projects are new if they have different objectives

- **Potential for Advancing the Quality of Education**
- **Proposed Approach and Cooperative Linkages**
- **Plan of Operation and Methodology**
- **Timetable**
- **Products, Results, and Measurable Outcomes**
- **Evaluation Plans**
- **Logic Model**
- **Collaborating USDA agency (if applicable)**
- **Dissemination Plans**
- **Institutional Capability and Capacity Building**
- **Key Personnel**
- **Cost-Effectiveness**

HSIs Data Management Plan (DMP)

Investigators must provide detailed (up to 2 pages) business and management plans. Panelists will evaluate whether the “Data management plan is appropriate, clearly described, and feasible” by reviewing these DMP components:

- **Expected data type**
 - Description of expected data and the source is adequate
- **Data format**
 - Data sets produced will contain enough information to allow independent use (understanding, validation, and analysis) of the data
- **Data storage and preservation**
 - Appropriateness of the mechanisms used to store and preserve data
- **Data sharing, protection, and public access**
 - Specific repositories and catalogs are named as appropriate.
 - When applicable, plans to protect confidentiality, personal privacy, proprietary interests, business confidential information, and intellectual property rights are provided
 - Restrictions such as copyright, confidentiality, patent, appropriate credit, disclaimers, or conditions for use of the data by other parties are outlined
- **Roles and responsibilities**
 - The person(s) who will ensure DMP implementation are identified
 - The budget includes sufficient resources to develop and implement the proposed DMP.

Evaluation Criteria

Potential for Advancing Quality of Education; Significance of the Problem



Institutional Capability and Capacity Building



Proposed Approach and Cooperative Linkages

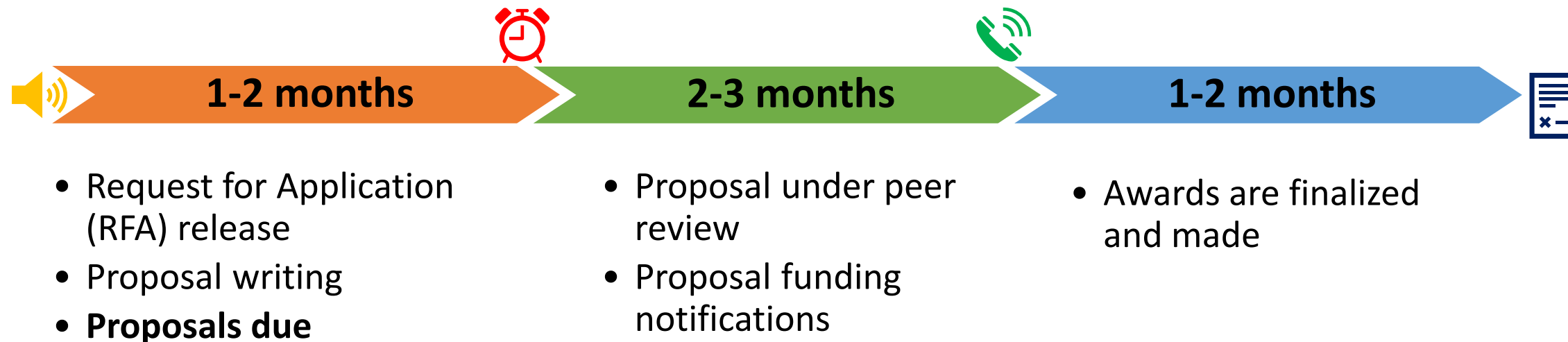


Key Personnel



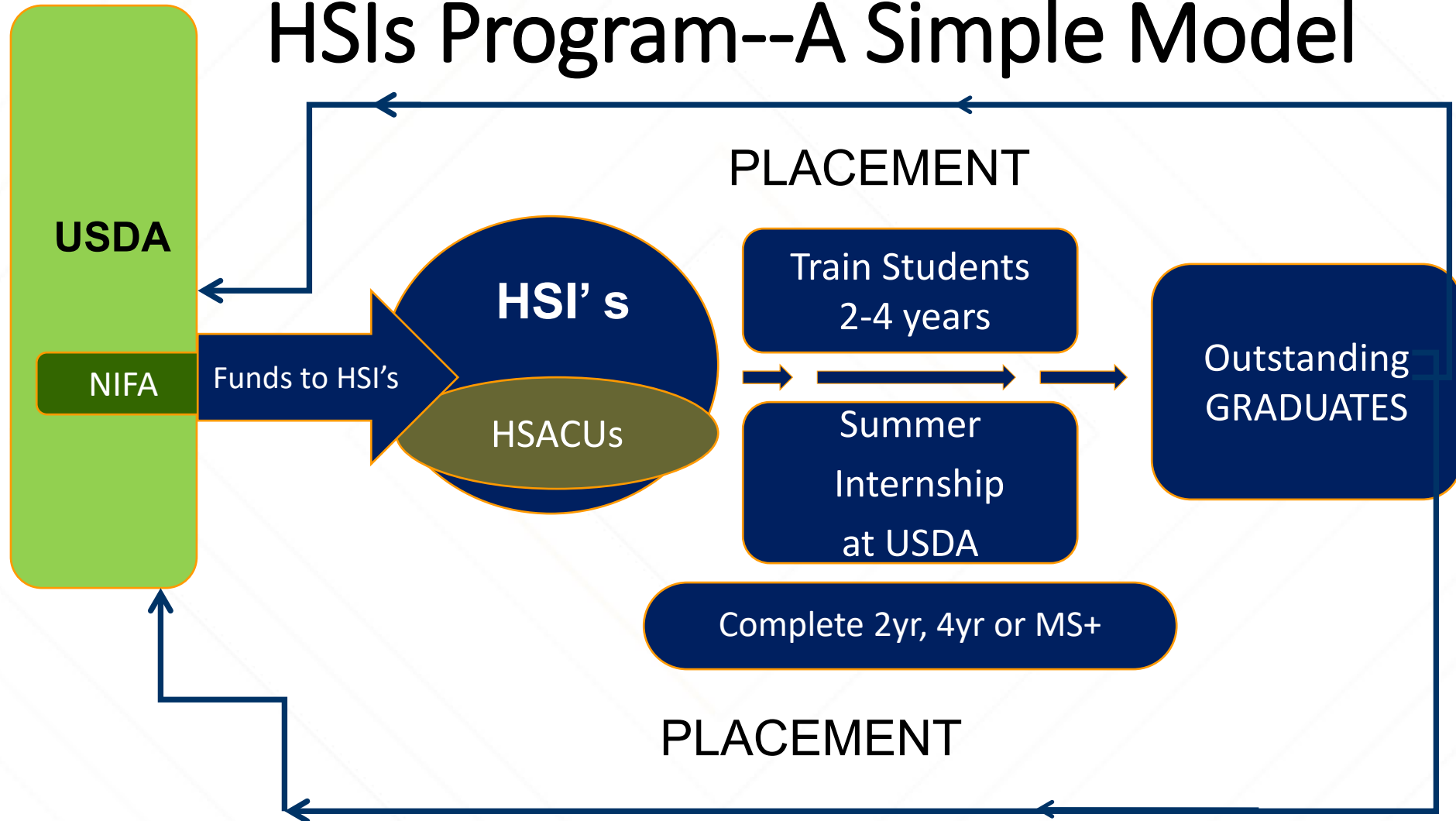
Budget and Cost-Effectiveness

Timeline of Competitive Programs



- **On average, a competitive program takes about 4-7 months from the proposal due date to an award being made to an institution.**
- Earliest recommended **date to start** proposed activities would be in August 2025.
- **If you do not receive a confirmation of application receipt** from NIFA within 30 days of RFA deadline, reach out to program.

HSIs Program--A Simple Model



Education Need Areas

1. Curricula Design, Materials Development and Library Resources
2. Faculty Preparation and Enhancement for Teaching
3. Instructional Delivery Systems
4. Scientific Instrumentation for Teaching
5. Student Experiential Learning
6. Student Recruitment and Retention

Food and Agricultural Sciences

- Animal health, production, and well-being
- Plant health and production
- Animal and plant germ plasm collection and preservation
- Aquaculture
- Food Safety
- Soil and water conservation and improvement
- Forestry, horticulture, and range management
- Nutritional sciences and promotion
- Farm enhancement
- Home economics
- Rural human ecology
- Youth development and agricultural education
- Markets for agricultural commodities and products
- Information management and tech transfer related to agriculture
- Biotech related to agriculture
- Big DATA related to agriculture
- Processing, distribution, marketing, and utilization of food and agricultural products



Hispanic-Serving Education Grants Program (HSI)

Project Types

Education/Teaching

Community
Development **

Grant Types

Regular

Collaboration

Conference



HSIs Regular Projects

Regular Grants can support targeted, original, scientific Education/Teaching projects or Community Development Projects

Eligibility: Any eligible HSI institution. May partner with other HSI or non-HSIs (optional).

Budget: up to \$400,000; Indirect cost: Use negotiated rate--max 30 percent.

- \$40,000 (out of the \$400,000) may be allocated to support one underrepresented student; additional funds could be allocated for student support

Timeframe: must be 48 months

Regular Bridge Grant: Enhance institutional capacity to strengthen educational programs and increase competitiveness of future applications.

Budget: \$200,000

No limit on number of Regular applications submitted per institution.
Funding up to two projects per institution.

Regular Project Example

- Texas State University
 - **Science, Technology, Engineering, Agriculture, and Mathematics: Integrating Scientific Inquiry in Curriculum for Pre-service Agricultural Education Teachers (STEAM-AGED) (2021)**
 - The program, STEAM-AGED, attracts and supports underrepresented students to prepare them for academic or professional science, technology, engineering, agricultural, or mathematics (STEAM) careers with USDA or similar employers



HSIs Education Regular Bridge Project (HSIs New to USDA)

- **Bridge Grant:** Enhance institutional capacity to strengthen educational programs and increase competitiveness of future applications
- **Eligibility:** available to institutions that have not previously received NIFA HSI funds
- Reviewed with regular grants—(like a second change for great ideas)
- **Budget:** \$200,000; Indirect cost: Use negotiated rate-max 30 percent
- **Timeframe:** must be 48 months



HSIs Collaborations Projects

Collaboration grants should develop competitive projects to attract new students into high-priority career fields in agriculture.

Eligibility:

- Group of two or more HSIs forming a linkage arrangement.
- Institutions **must** commit to recruiting and graduating a minimum of **15 undergraduate** (to complete baccalaureate) **PLUS 10 graduate** (Master's or PhD) students. Including support for graduate students is expected.
- **Budget:** \$1,200,000 max; Indirect cost: Use negotiated rate-max 30 percent.

Timeframe: must be 48 months

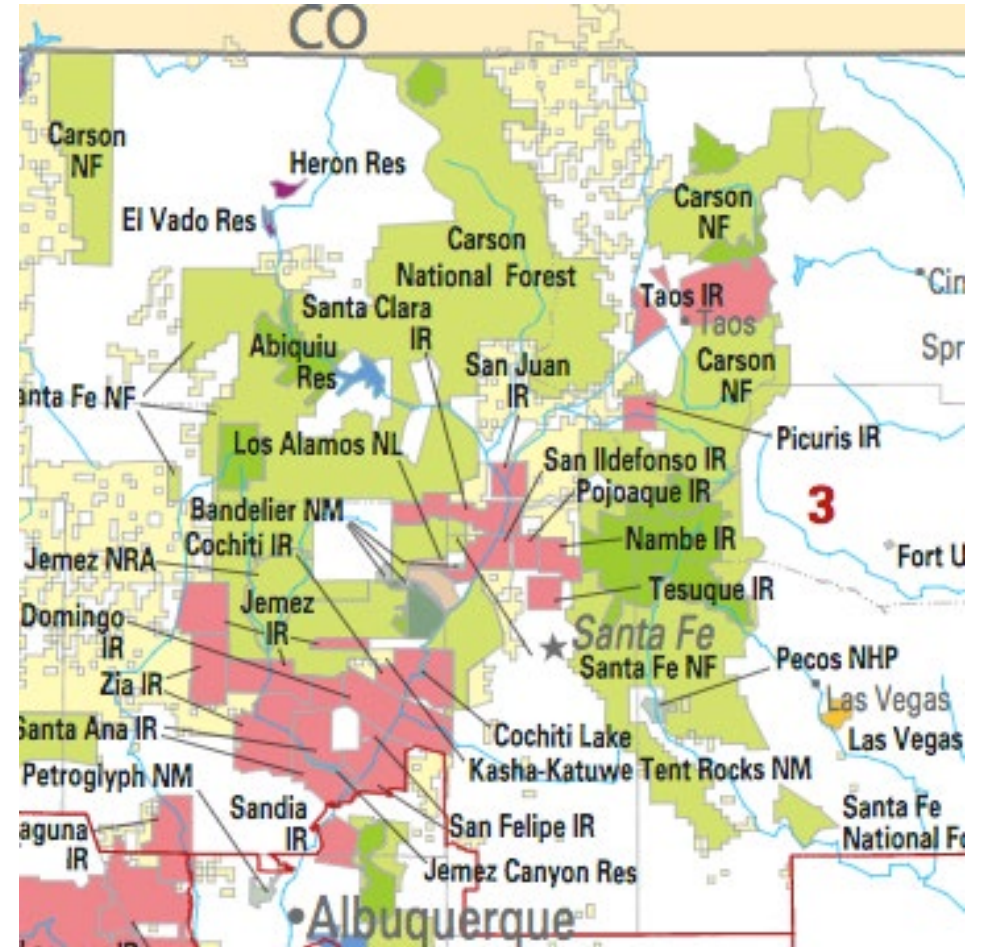
- No limit of applications per lead institution; only one collaboration will be funded

Northern New Mexico

Land of Challenge & Opportunity



- 26% children live below poverty line.
- 30% youth don't graduate high school.



- 35% of NM is Public Land.
- Shortage of skilled college graduates.



Major project objectives

1. Student Recruitment and Retention
2. Strategic Transfer Network
3. Agency Partnerships for Professional Development and Job Placement
4. Leadership Skills Development

“I enjoy that everyone in the program has similar goals and we are all going to school for very similar things.”

Project Timeline



- Set up Award
- Recruit 1st Cohort
- Build Team
- Evaluation Plan
- IRB Approval
- Set up Data Spreadsheet

- Set up Mentoring
- Build Partnerships
- Implement Programming

- Articulation Agreements
- Transfer Network & Support

- 15 B.S. degrees
- 10 M.S. degrees
- Job Placement
- Dissemination
- Momentum



Activities at UNM-Taos

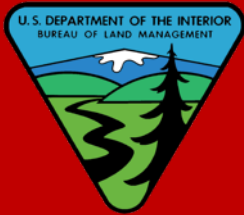


- Academic Stipends
- Articulation Agreements with 4-year Partners
- Math Tutoring
- Professional Development
- Advising
- Transfer Support
- Mentoring
- Job Placement



Professional Development

- Resume Crafting & Interview Skills
- USAJobs profile & training on how to apply
- Paid Internships



- “It has been exciting to get an idea of life as an employee in the Forest Service. Without this internship, I never would have made the friends and connections that I did. I am excited to update my resume and apply for a position.”

Position

Forestry Technician

Timber Management Officer

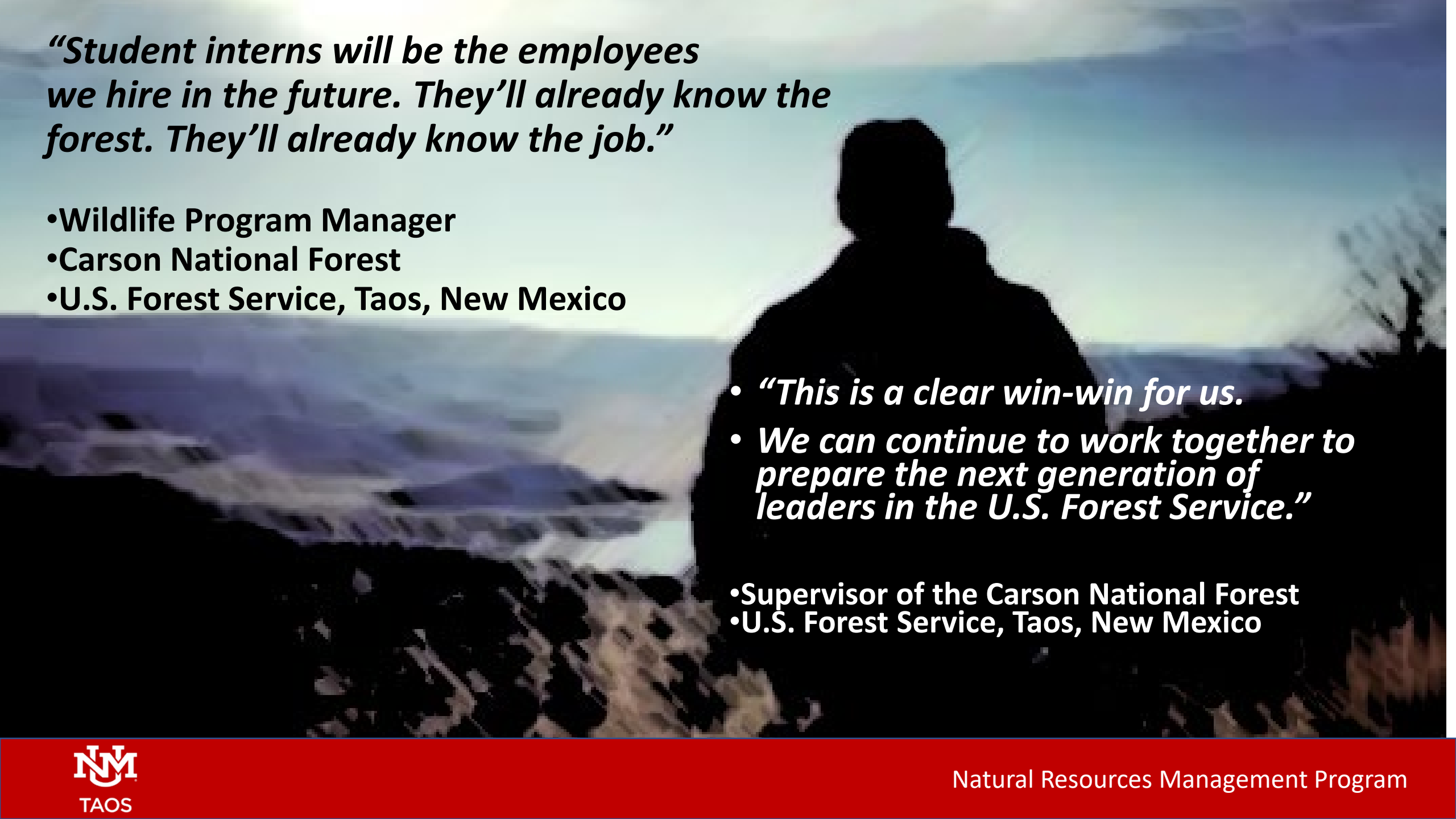
Environmental Program Manager

Environmental Specialist

Professional Forester

Volunteer Coordinator Resource Assistant

Professional Forester



“Student interns will be the employees we hire in the future. They’ll already know the forest. They’ll already know the job.”

- Wildlife Program Manager
- Carson National Forest
- U.S. Forest Service, Taos, New Mexico

- ***“This is a clear win-win for us.***
- ***We can continue to work together to prepare the next generation of leaders in the U.S. Forest Service.”***

- Supervisor of the Carson National Forest
- U.S. Forest Service, Taos, New Mexico

Potential for working with an USDA Agency

The U.S. Forest Service in Arizona employs approximately 2,000 people, including permanent, seasonal, and temporary employees. The Forest Service in Arizona manages over 12 million acres of public land, requiring a diverse workforce to handle forest management, firefighting, conservation, and recreation services across the state's six national forests.

National Forests in Arizona along with the closest major cities:

1. Apache-Sitgreaves National Forests
 - Closest City: Show Low
2. Coconino National Forest
 - Closest City: Flagstaff
3. Coronado National Forest
 - Closest City: Tucson
4. Kaibab National Forest
 - Closest City: Williams
5. Prescott National Forest
 - Closest City: Prescott
6. Tonto National Forest
 - Closest City: Phoenix

Each of these forests offers various outdoor activities like hiking, camping, and wildlife viewing. They cover a range of ecosystems from desert landscapes to lush pine forests.

Positions

Environmental Specialist

Forestry Technician

Timber Management Officer

Timber Management Officer

Environmental Program Manager

Environmental Specialist

Professional Forester

Volunteer Coordinator Resource

Assistant

Professional Forester



HSIs Conference Projects

- **Conference grants support scientific meetings that bring together educators**
- Applications requested for:
 - HSIs Conference
 - Other Conference Topics
- **Eligibility:** Any eligible HSI
- **Budget:** \$50,000
- **Timeframe:** 36 months
- No more than two applications per lead institution



HSIs Data Conference Project

- **Conference grants support scientific meetings that bring together educators**
- Applications requested for:
 - HSI Assessment and Evaluation Conference
- **Budget:** \$150,000
- **Timeframe:** 36 months
- One application per lead institution

Conference Project Example

- St. Edwards University
 - **A Conference Proposal for “Building STEAM (Science, Technology, Engineering, Agriculture, and Mathematics) at Texas Hispanic-Serving Institutions”**
 - The conference will promote opportunities for students to access internships and careers related to Food, Agriculture, Natural resources, and Human sciences (FANH) and opportunities for faculty to access research and funding related to FANH.



Leadership★Networking★Access

**Texas Hispanic-Serving
Institutions Consortium**

Community Development Projects

- **Can support single-function community development projects that deliver science-based knowledge or informal educational programs**
- **Eligibility:** Any eligible HSI institution.
 - Optional: Applicants may partner with other HSI or non-HSIs.
- **Budget:** up to \$400,000 – Only REGULAR Projects
- **Timeframe:** must be 48 months
- No limit on number of Regular applications submitted per institution

Community Development Projects (continued)

- Support **informal education** to increase food and agricultural literacy
- Increase **understanding of science data, information, and programs**
- **Build science-based capability** and enable informed decision making
- Develop **new applications of instructional tools** and curriculum to **increase technical competency**
- Offer **non-formal learning programs** that increase accessibility
- Develop programs that **increase public knowledge and citizen engagement**



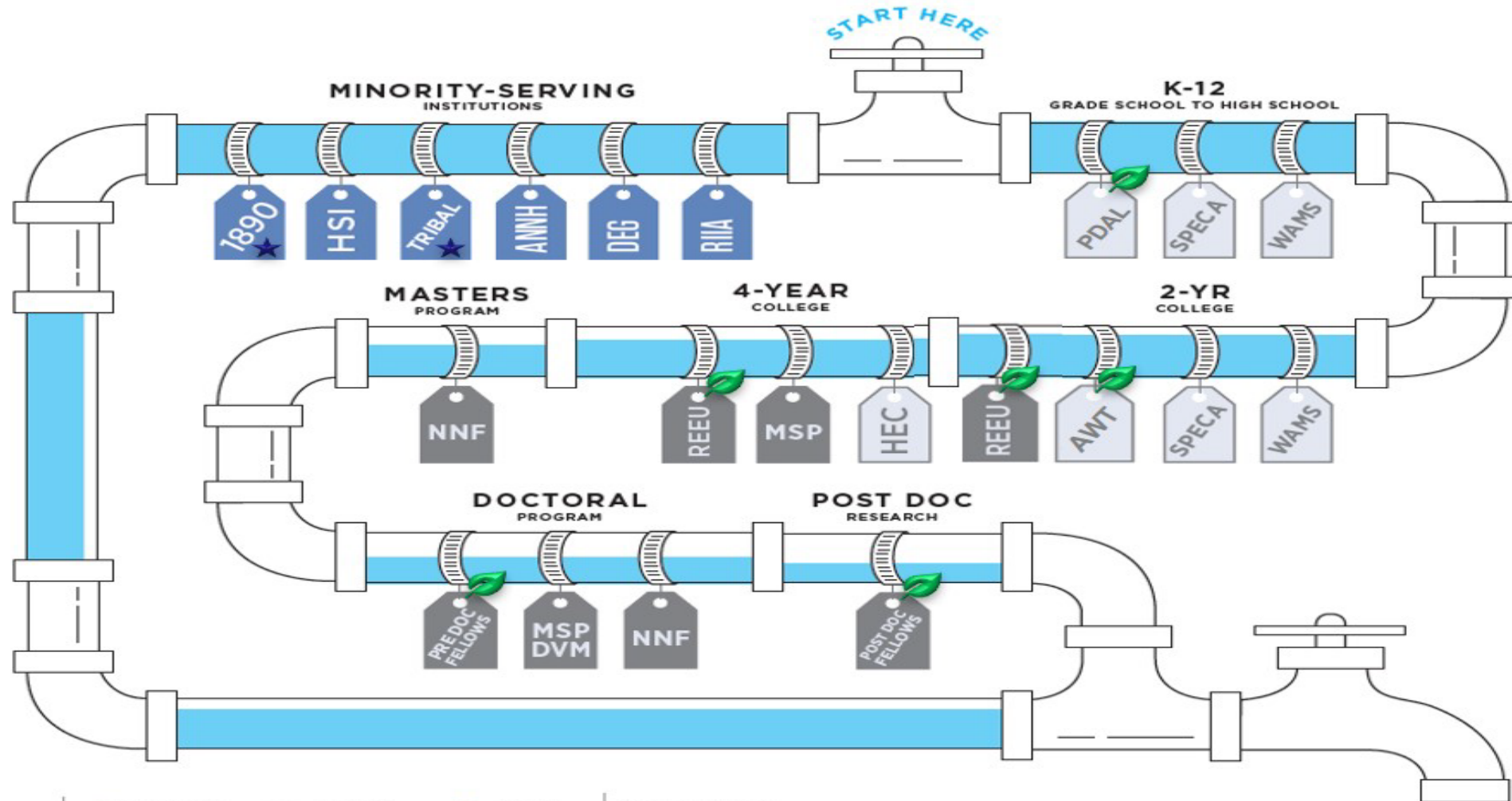
Other NIFA Education Programs

NIFA administers **more than 25 Education**, Training, and Capacity Building programs with **more than \$225 million in annual appropriations**

Explore programs that support:

- ◇ Workforce Development
- ◇ Learning & Engagement
- ◇ Capacity Building for eligible Minority-Serving Institutions and Non-Land-Grant Colleges of Agriculture

Explore Education and Training Programs



KEY



supports teachers & faculty



supports students & postdocs



builds capacity

please see page two for program descriptions



Contains multiple programs



AFRI program

SUPPORTING THE NEXT GENERATION OF AG SCIENTISTS





Higher Education Challenge (HEC) Grants Program

Priority: To strengthen institutional capacities, including curriculum, faculty, scientific instrumentation, instruction delivery systems, and student recruitment and retention, to respond to identified state, regional, national, or international educational needs in the food and agricultural sciences, or in rural economic, community, and business.

Project Types: Education/Teaching

Grant Types: Planning Activity; Standard Grant; Collaborative Grant Type 1; Collaborative Grant Type 2

Maximum Award Amounts:

- Planning Activity – Approx. \$30,000
- Standard – Approx. \$150,000
- Collaborative 1 – Approx. \$300,000
- Collaborative 2 – Approx. \$750,000

Program Contact: Solomon Haile, (615) 517-4157 or Solomon.Haile@usda.gov



Capacity Building Grants for Non-Land Grant Colleges of Agriculture (NLGCA)

Priorities: Assist NLGCA-certified institutions in maintaining and expanding their capacity to conduct education, research, and outreach activities relating to food, agriculture, renewable resources, and related sciences.

Project Types: Research, Education, Extension, or Integrated Projects

Grant Types: Standard

Maximum Award Amounts:

- Planning/Conference Grants up to \$30,000 (2 - 3 years)
- Regular Grants \$150,000 (2 - 3 years)
- Collaboration Joint: \$300,000, 2 or more institutions (3 - 4 years)
- Large-scale Comprehensive Initiatives: \$750,000, 3 or more institutions (3 -4 years)

<https://www.nifa.usda.gov/grants/programs/k-12-higher-education-programs/capacity-building-grants-non-land-grant-colleges-agriculture-program>

Program Contact: Michelle Schelske-Santos, (757) 378-8380 or Michelle.schelske-santos@usda.gov



Agricultural Sciences National Needs Graduate and Postgraduate Fellowship (NNF) Grants Program

Priority: To provide funding to support graduate student training and completion of master's and/or doctoral degree programs in identified national need areas within the food and agricultural sciences.

Project Types: Education

Grant Types: Standard

Total Funding: \$3,100,000

Maximum Award Amount: Approximately \$262,500

Program Contact: Dr. Ray Ali, (816) 926-1453 or nifafellows@usda.gov



Higher Education Multicultural Scholars Program (MSP)

Priority: To increase the diversity of the food and agricultural scientific and professional workforce and advance the educational achievement of all Americans by providing competitive grants to colleges and universities. Colleges and Universities can use this funding to support undergraduate scholarships and related experiential learning opportunities leading to the completion of a Bachelor's degree in the FANH Sciences or a Doctor of Veterinary Medicine degree.

Project Types: Education/Teaching

Grant Types: Standard

Maximum Award Amount: \$250,000

Program Contact: Courtenay Simmons, (816) 926-6022 or Courtenay.Simmons@usda.gov

Secondary Education, Two-Year Postsecondary Education, and Agriculture in the K-12 Classroom Challenge (SPECA)

Funding Priorities:

- **Strengthen secondary education and two-year** postsecondary education in the food and agriculture sciences and **promote complementary and synergistic linkages** among secondary, two-year postsecondary, and higher education programs
- **Enhance** the **quality** of **K-14 instruction** to help meet current and future national food and agricultural sciences workplace needs
- **Increase** the **number** and **diversity** of students who will pursue and complete a 2 or 4-year degree in the food and agricultural sciences.
- **Promote** and **strengthen** secondary education and 2-year postsecondary education in **agriscience** and **agribusiness** and **synergistic linkages** with higher education programs in the food and agricultural sciences



Secondary Education, Two-Year Postsecondary Education, and Agriculture in the K-12 Classroom Challenge (SPECA)

Proposed Budget Requests:

\$50,000 to \$300,000 total per project for project periods of 2 or 3 years

Proposal limits: One application per eligible institution

Project Types: Education/Teaching Projects

Grant Types: Regular and Collaboration Grants

Tentative Application Deadline: April 2024 (not yet announced)

Program Contacts:

NPL: Christopher Greene Christopher.Green@usda.gov

PS: Donna Hiatt

Donna.Hiatt@usda.gov



****AFRI-EWD RFA****

Programs:

- Research and Extension Experiences for Undergraduates (REEU)
 - Institution applies for a group of fellowships
- Professional Development for Agricultural Literacy (PDAL)
 - Training and continued education of K-14 ag teachers
- Agricultural Workforce Training at Community Colleges (AWT)
- Postdoctoral Fellowships --Individual applies
- Predoctoral Fellowships --Individual applies

Application Deadline Dates: Dates vary by program area priority

Funding: FY2024 \$49,000,000-- Range of awards: Up to \$750,000



AFRI EWD: Research and Extension Experiences for Undergraduates (REEU) (A7401)

Priorities: promotes research and extension learning experiences for undergraduates such that upon graduation they may enter the agricultural workforce with exceptional skills. This initiative allows colleges and universities to provide opportunities for undergraduate students, including those from underrepresented and economically disadvantaged groups, minority-serving institutions, community colleges, and universities.

Project Type(s): Research, Extension, Education, or Integrated Projects

Grant Type(s): Standard Grants and FASE (Strengthening Standard) Grants only

Maximum Award Amount(s):

- \$600,000 for 48-month REEU projects;
- \$750,000 for 60-month REEU projects

Program Contact(s): Dr. Michelle Schelske-Santos, michelle.schelske-santos@usda.gov
(757) 378-8380

Agricultural Workforce Training at Community Colleges (AWT)

Funding Priorities: Develop **new workforce training** programs, or **expand, improve, or renew existing** workforce training programs at **community, junior, and technical colleges/institutes**

- Developed by or in active partnership with community/junior/technical colleges/institutes and their industry partners
- Provide students the skills and tools necessary to secure industry-accepted credentials to join the workforce upon project participation completion.
 - Certificates, training or coursework for/part of baccalaureate or post-graduate degrees or training ARE NOT supported under this program area priority
- Funds should be used to support student activities



Agricultural Workforce Training at Community Colleges (AWT)

Proposed Budget Requests:

- \$500,000 total per project for project periods of 3 or 4 years
 - A minimum of 50% of project costs must be for participant support
- **Proposal limits:** no limit but, NIFA may award up to two grants per lead institution.
- **Project Types:** Education, Extension, or Integrated Projects only
- **Grant Types:** Standard, and FASE Strengthening Standard Grants only
- **Application Deadline:** TBD (5:00 p.m. ET)

Program Contact:

NPL: Carlos Ortiz, Ph.D. Carlos.Ortiz@usda.gov

PS: Kendyl Barney

Kendyl.Barney@usda.gov



AFRI EWD Predoctoral (A7101)/Postdoctoral Fellowships (A7201)

The Student/Fellow Applies, not Faculty

Project: to be completed within the 2–3-year timeframe of the fellowship.

- **Pre-doctoral** will work **on an aspect of already funded research.**
- **Postdoctoral** will work in **a totally independent research of that of the mentor.**

Mentoring: Mentors and Advisors are expected to be involved in the development of the application

Professional Development: description of all activities fellow plans to perform and participate to enhance their training

Evaluation: what are the milestones, indicators of success and dissemination plans

Program Contact: Dr. Ray Ali, (816) 926-1453 or nifafellows@usda.gov





Equipment Grants Program (EGP)

Seeks to strengthen the quality and expand the scope of fundamental and applied research at Colleges and Universities and State Cooperative Institutions.

Funds the acquisition of shared-use special purpose equipment/instrument for fundamental and applied research for use in the food and agricultural sciences programs including data science and data systems.

EGP grants are not intended to replace requests for equipment in individual project applications through other NIFA capacity/competitive Programs.

Funding Request: \$25,000-\$500,000

Duration: 3 years

Proposals per Institution: Two maximum

Awards per Institution: One maximum

<https://nifa.usda.gov/grants/programs/equipment-grants-program-egp>

Program Contact(s): Christopher Green christopher.green@usda.gov, Junia Jean-Gilles Beaubrun junia.jean-gillesbeaubrun@usda.gov



Not AFRI Not Education



Water Quantity and Quality (A1411)

Priorities: to improve water science, management and technologies, water conservation and water use efficiency; promote common data exchange formats and access to data for decision-making, improve forecasting and model water related systems.

Project Type(s): Research and Integrated Projects only

Grant Type(s): a. Standard, Conference, and **FASE (Strengthening Standard, New Investigator, Strengthening Conference, Seed, Equipment, and Sabbatical)** Grants only

Maximum Award Amount(s):

- **\$650,000 for research** projects only, and **\$750,000** for integrated projects only for Standard Grants, Strengthening Standard Grants and New Investigator Standard Grants;
- **\$800,000 for research only projects and \$900,000** for integrated projects with specific partnerships
- \$300,000 for all Seed Grants
- \$50,000 for Conference and Equipment Grants

Program Contact(s): Dr. James Dobrowolski, (202) 420-8918 or james.dobrowolski@usda.gov



Rapid Response to Extreme Weather Events Across Food and Agricultural Systems (A1712)

Purpose: Support innovative applied research, extension, and integrated efforts needed to alleviate the impacts of extreme weather-related disasters, across the food and agricultural system.

These may include trainings, communication strategies, tools and technologies, food supply and food safety logistics, and climate-smart practices. These solution-driven projects can be rapidly adopted by end users.

Project Types: Extension or Integrated Projects

Grant Types: Standard and Strengthening Standard

Maximum Award Amount(s): \$300,000 for Standard Grants and Strengthening Standard

***LOI required; Rolling deadline**

Program Contact(s): Dr. Ashley Mueller, (402) 405-3122 or afri-rapidresponse@usda.gov, Dr. Amy Ganguli, (816) 642-0813, Dr. Michelle Colby, (202) 577-8815, and Dr. Amer Fayad, (816) 894-7228



Beginning Farmers and Ranchers (BFRDP)

Priorities: To help beginning farmers and to enter and/or improve their successes in farming, ranching, and management of nonindustrial private forest lands, through support for projects that provide education, mentoring, and technical assistance to give beginning farmers and ranchers the knowledge, skills, and tools needed to make informed decisions for their operations and enhance their sustainability.

Project Types: Training and Technical Assistance

Award Range: \$49,000 - \$750,000

Contact: Denis Ebodaghe denis.ebodaghe@usda.gov



[Home](#) | [Confidentiality](#) | [Helpful Hints](#) | [Contact us](#)

Welcome

Welcome to the Peer Review System for the National Institute of Food and Agriculture. If you are a returning panelist, you may log in and get started.

Volunteer:

If you would like to volunteer to serve as a peer review panelist for our programs, please provide your information using this link for [Panelist Recruitment](#). Panelists are selected based on their expertise, credentials, and NIFA panel needs. For more information, contact the program staff listed in the Request for Applications for the program you are interested in serving on.

Panelist Account Activation:

If you do not have a login and have received the welcome to PRS email to serve on a NIFA panel, you may use this link to [Activate your Account](#).

PRS has been modified to work on multiple browsers. Edge, Chrome, Firefox, and Safari have all been verified as compatible with PRS as of June 2021. If you have difficulty accessing PRS on one of these browsers, please contact the program staff member assisting with your panel.

Privacy information: The information you provide will be used by NIFA in selecting reviewers for grant applications submitted to NIFA programs. In addition, the contact information may be used to update records pertaining to active NIFA grant applications and grants. This information will not be used for any other purpose

An asterisk (*) indicates a required field.

Log in

* User ID :

* Password :

Forgot your password?

Click here to access your account via your [verification question](#).

[Home](#) | [Confidentiality](#) | [Helpful Hints](#) | [Contact us](#)

Volunteer to Become a Panelist!



Non-Discrimination Statement

<https://www.usda.gov/non-discrimination-statement>

In accordance with federal civil rights law and U.S. Department of Agriculture (USDA) civil rights regulations and policies, the USDA, its Agencies, offices, and employees, and institutions participating in or administering USDA programs, are prohibited from discriminating based on race, color, national origin, religion, sex, gender identity (including gender expression), sexual orientation, disability, age, marital status, family/parental status, income derived from a public assistance program, political beliefs, or reprisal or retaliation for prior civil rights activity, in any program or activity conducted or funded by USDA (not all bases apply to all programs). Remedies and complaint filing deadlines vary by program or incident.

Persons with disabilities who require alternative means of communication for program information (e.g., Braille, large print, audiotape, American Sign Language, etc.) should contact the responsible agency or USDA's TARGET Center at (202) 720-2600 (voice and TTY) or contact USDA through the Federal Relay Service at (800) 877-8339. Additionally, program information may be made available in languages other than English.

To file a program discrimination complaint, complete the USDA Program Discrimination Complaint Form, AD-3027, found online at How to File a Program Discrimination Complaint and at any USDA office or write a letter addressed to USDA and provide in the letter all of the information requested in the form. To request a copy of the complaint form, call (866) 632-9992. Submit your completed form or letter to USDA by: (1) mail: U.S. Department of Agriculture, Office of the Assistant Secretary for Civil Rights, 1400 Independence Avenue, SW, Washington, D.C. 20250-9410; (2) fax (202) 690-7442; or (3) email: program.intake@usda.gov.

USDA is an equal opportunity provider, employer and lender.

Questions?

Thank you!